

Basic Configuration of ALLWIN Gateway with TRIXBOX

The ALLWIN's VoIP devices have been tested that it's well compatible with TRIXBOX. Here is the basic application note apply to VoIP network with TRIXBOX. **the copyright of TRIXBOX belongs to Fonality.**

You can download the trixbox ISO image file which contains the newest version of TRIXBOX CE with CentOS, Asterisk, FreePBX from <http://www.trixbox.org> . Burn this ISO file as a CD to install on a computer.

For more details about TRIXBOX, please visit <http://www.trixbox.org>

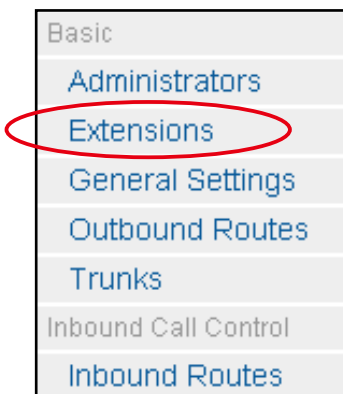
After TRIXBOX setup completely, you can start to configure ALLWIN VoIP device as a extension or a trunk on your own VoIP system.

Method 1: Extension

Here are steps to configure ALLWIN Tech VoIP gateway as an extension in TRIXPBX. (Both gateway and IP phone can be configured as extensions.)

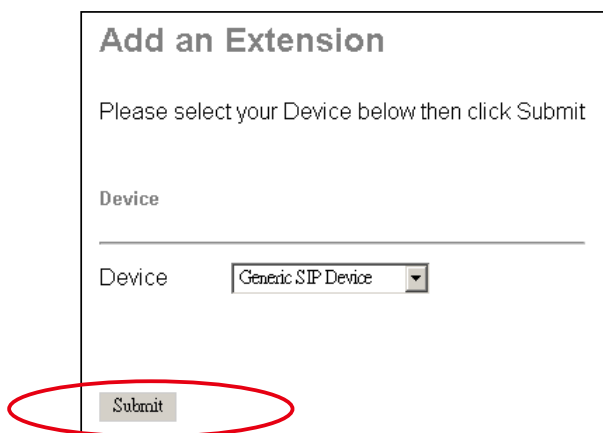
Step 1 : Add an extension in freePBX.

1.



Into the setup page of freePBX, click "Extensions",

2.



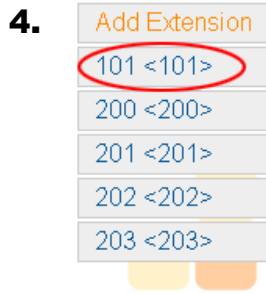
select "Generic SIP Device" and click "Submit".

3.



Fill in necessary info in the form, (for example: both extension number and name are "101", secret : abc123) and click "submit", then "apply configuration changes" on the top of the page.

Apply Configuration Changes



After that, you can see a new extension (101) generated in the extension list.

Step 2 : Register ALLWIN's VoIP gateway to freePBX

Into the ALLWIN device's Web UI (how to enter? please click here), select the left control button "Register Server" --> "Server1", fill in the IP of the TRIXBOX in "SIP Proxy URL". And also Account, Password which are matched to Step1, then click "Modify".

Server # 1

Protocol: SIP **Register:** Independent

Enable SIP Proxy:

SIP Proxy URL	Port[1 - 65535]	Thought Outbound Proxy	Port[1 - 65535]
TRIXBOX IP address	5060		5060
TTL (Registration interval) [10 - 7200 s]	Domain	Proxy Require	
120			

Line	Type	Remark	Number	Account	Password	Conference ID	Enable
1	FXO						<input type="checkbox"/>
2	FXO						<input type="checkbox"/>
3	FXS			101		<input checked="" type="checkbox"/>
4	FXS						<input type="checkbox"/>

Modify



Check the "Register Status" if the registration successful. (green light means ok)

Step 3 : Setup VoIP Call In & VoIP Call out

Select the left control button "Routing Setup" --> "VoIP Call Out". Refer to the diagram below and fill in values , then click "Modify".

VoIP Call Out									
			MaxDigits: <input type="text" value="20"/>	FirstDigitTime(Sec): <input type="text" value="30"/>	OtherDigitTime(Sec): <input type="text" value="5"/>				
Index	Remark	Area Code	Min Digits	Max Digits	IP Address	Strip	Prefix	Profile	Del
1		<input type="text"/>	<input type="text" value="3"/>	<input type="text" value="3"/>	<input type="text" value="rs1"/>	<input type="text"/>	<input type="text"/>	<input type="text"/>	<input type="text" value="Del"/>
<input type="button" value="Modify"/> <input type="button" value="Reset"/>									

In this example, 101 extension need to set a call out rule for dialing extensions in TRIXBOX. Leave *Area Code* blanked for receiving any codes, enter "3" in *Mini* and *Max digits* (because all extensions are 3 digits), IP Address set "rs1" which means indicate to server#1.

VoIP Call In														
Index	Area Code	Auth.	Strip	Prefix	Maximum	Minimum	From	To	LineNo	RS Verify	CallWaiting	Alert	Profile	Forward
1	<input type="text" value="101"/>	<input type="checkbox"/>	<input type="text"/>	<input type="text"/>	<input type="text"/>	<input type="text"/>	<input type="text" value="3"/>	<input type="text" value="3"/>	<input type="text" value="None"/>	<input type="text"/>	<input type="text" value="Disable"/>	<input type="text" value="0"/>	<input type="text"/>	<input type="text"/>

index1: enter "101" in *Area Code* and *From* "3" *To* "3" for assigning normal phone which is connected to port 3 of gateway as 101 extension.

Always remember to save modification when you modify the configuration.

Method 2: Trunk

Here are steps to configure ALLWIN VoIP gateway as a trunk in TRIXPBX.

Step 1 : Add Trunk in freePBX.

1.

Basic
Administrators
Extensions
General Settings
Outbound Routes
Trunks
Inbound Call Control
Inbound Routes

Into the setup page of freePBX, click "Trunks",

2.

Add a Trunk
Add ZAP Trunk
Add IAX2 Trunk
Add SIP Trunk
Add ENUM Trunk
Add Custom Trunk

then click "Add SIP Trunk".

3. Enter the following:

Outgoing Settings

Trunk Name:

PEER Details:

```
context=from-trunk
dtmfmode=rfc2833
host= ALLWIN gateway IP address
type=peer
```

Trunk Name "G322" can be changed, and please enter your ALLWIN gateway IP address behind "host=".

4.

Add Route

Route Name:

Route Password:

Emergency Dialing:

Intra Company Route:

Dial Patterns

9|

Clean & Remove duplicates

Enter a *Route Name* (for example "9_outside"), and enter "9|" in *Dial Patterns*.

5.

Trunk Sequence

SIP/G322

Submit Changes

Select "SIP/G322" in *Trunk Sequence*, and click "*Submit Changes*".

Step 2 : Register ALLWIN gateway to freePBX.

Please configure the Server page in gateway, refer to [Method 1: Extension Step 2](#).

Step 3 : setup VoIP Call In & VoIP Call out .

Select the left control button "Routing Setup" --> "VoIP Call In". Refer to the diagram below and fill in values, then click "Modify".

VoIP Call In													
Index	Area Code	Auth. Strip	Prefix	Maximum	Minimum	From	To	LineNo	RS Verify	CallWaiting	Alert	Profile	Forward
1	101	<input type="checkbox"/>				3	3	None		Disable	0		
2		<input type="checkbox"/>				1	1	None		Disable	2		

index1: enter "101" in *Area Code* and *From* "3" *To* "3" for assigning normal phone which is connected to port 3 of gateway as 101 extension,

index2: leave the *Area Code* blanked, *From* "1" *To* "1" port (port1 is the FXO port which connected PSTN line.), and select "2" in *Alert*.

Please configure the *Call Out* page in gateway, refer to [Method 1: Extension Step 3](#).

Always remember to save modification when you modify the configuration.

The gateway's configuration of this document is base on G322C (2FXS+2FXO) VoIP gateway, the configuration steps of other ALLWIN's VoIP device(2 ports, 4 port, 8 ports) is also the same as this.

Make a Test Call

After configuring the ALLWIN gateway, you may place test calls to test your configuration.

1. Using extension 101 (normal phone connected to FXS port of gateway) dial another extension which is already working in TRIXBOX).
2. Dial "9" with any extension will automatically route to the PSTN line which is connected to FXO port in gateway (Trunk), you can hear the dial tone, then just dial the number from local side.
3. For dialing outbound calls, please refer to the dial rules from your VSP or ITSP, and configure the *outbound route* in TRIXBOX.