

Datasheet VoIP Router

2FXS + 2FXO
+ Wireless

Connect Port

- 2x FXO+2x FXS / 2x FXS+2x PSTN ports
- 4x RJ-45 LAN Ethernet 10/100 Ports
- 1x RJ-45 WAN Ethernet 10/100 Port

Voice Processing

- Audio CODEC:
 - G.729/G.729a, (8kbps)
 - G.723.1, (5.3 or 6.3kbps)
 - G.711 A-law / u-law, (64kbps)
 - G.726, (ADPCM 40, 32, 24, 16 kbps)
- Transparent pass through
- G.168 echo cancellation
- Carrier tone detection and generation
- Silence suppression and comfort noise
- DTMF In/Out band Relay
- DTMF/ Call progress detection and generation
- Q.931 Fast Start
- Support Caller ID (FSK, DTMF)

Voice Signaling

- Support SIP & H.323 simultaneous VoIP calls
- Support SIP v2.0 Standard (RFC3261)
- NAT Traversal
 - Outbound Proxy
 - STUN Server
- Register up to 4 Server simultaneously
- Support multiple dialing plan / Call hunting group
- Adaptive Jitter Buffer function
- Multiple call profile for different parameters

Route Functions

- Support static and dynamic IP from DHCP, PPPoE, Bridge mode
- Support Bandwidth control (traffic shaping)
- Build-in DHCP Server
- Dynamic DNS Support
- Support Network access rules (LAN to WAN & WAN to LAN)
- Self-Protection against DoS Attacks
- Support NAT through function
- Supported Protocol: UDP, TCP, NAT, BOOTP, TFTP, FTP, HTTP, TELNET, IEEE 802.3/ IEEE 802.3u
- Support SNMP, SNTP, HTTP, FTP, NAT, DNS, uPnP, DDNS
- NAT function: Virtual Server, Port mapping, ALG, DMZ, Static routing table
- Firewall option: Client filtering, URL filtering, MAC control, Drop Port scans
- Support IP TOS (Type of Service) for VoIP

VoIP/PSTN smart call router

- IP/PSTN Dual Access –Incoming and outgoing calls from both IP and PSTN networks use same POTS phone set.
- Dual FXO/FXS interface for connect between PBX and PSTN
- Smart routing select between VoIP and PSTN by prefix number
- Automatic reroute the call via PSTN when VoIP failure with warning sound
- Maintain the call by bypass relay when power failure
- Direct analog bypass route when call between Line and Phone
- Support call waiting notice when VoIP Talking

Fax Support

- T.38FAXRelay

Management

- Auto-Provisioning Via Automated Centralized Configuration File
- Web Interface Management
- Configuration Restore/Backup
- Software upgrade via TFTP client or FTP server
- TELNET
- TFTP Client (Remote Access)
- 1 Reset button for load factory default.

LED Indicators

- Ready, Wireless, Status, WAN, LAN1~4, LINE 1~2, PHONE1~2

Power

- External AC Power Adapter
- 12V DC, 1.5A

Temperature

- Operation: 0° C to 45° C
- Storage: -20° C to 75° C

Humidity

- Up to 95% Non-Condensing

Dimensions

- 218 x140 x38 mm (W/D/H)
- Weight :420g

Warranty

- One Year Limited Warranty

VoIP Router+Wireless!
802.11b/g

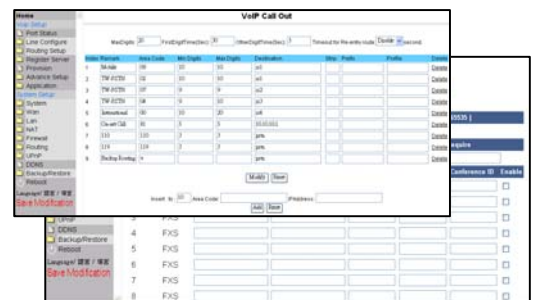
H.323 & SIP simultaneously support!
Deploy into any multimedia, interactive, or softswitch network with the leading call and session signaling protocol

Register up to 4 SIP or H.323 accounts mixable simultaneously!
Flexible registration for different VoIP Route plan

Bandwidth Control
user can manage the limitation of network bandwidth and prioritize VoIP packet to pass through

Firewall, NAT, DHCP, PPPoE
Connect to any broadband or access provider, serve the whole network, and secure your data. User configurable IP services ensure every host is connected to the LAN.

Auto Provision Server
Easy to remote configure/Upgrade via Provision System.



Setup Web UI

Model Information

G222:2FXS+2FXO

G2200:2FXS+2PSTN

G222g:2FXS+2FXO+802.11g

G2200g:2FXS+2PSTN+802.11g